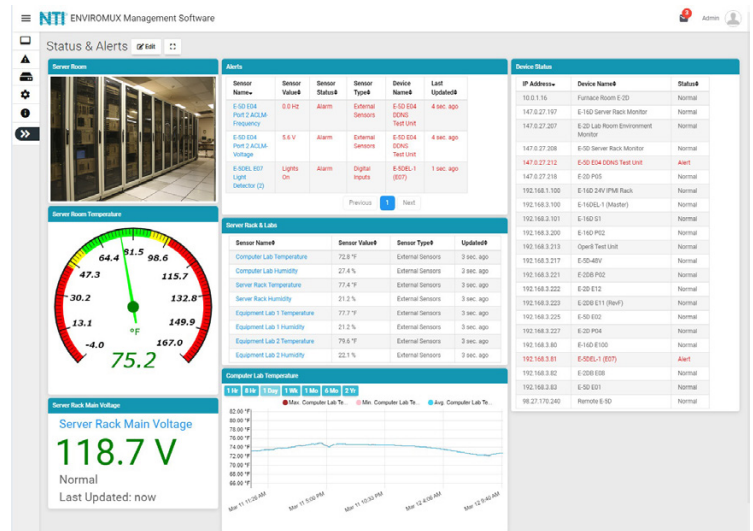


Self-Hosted Management Software for Enterprise Environment Monitoring Systems

ENVIROMUX®

- Units may be monitored individually or in a group.
- Display values and status for individual sensors or list of sensors.
- Self-hosted software – ideal for users in industries that require local software management solutions for security or data privacy purposes.
 - Install on a Windows-based server or computer.
 - ◆ Operating system requirements: Windows 7/8/10 32-bit or 64-bit, Windows Server 2008/2012/2016/2019 32-bit or 64-bit.
- Any computer, smartphone, and/or tablet with a web browser installed can be used to access the software.
 - Access is operating system independent through the HTML5 user interface on the computer/smartphone/tablet's web browser.
 - No clients or special apps to install.
- Supports 1,000 users accessing the software program at the same time.
 - Users can configure their own dashboards to display the data relevant to them and the window arrangement.
 - ◆ Customize dashboards to display unit status, sensor data, gauges, graphs, and IP camera snapshots.
- NTI will provide customer, without charge, copies of any appropriate updates/enhancements for 12 months. This software update service is optionally extendable every twelve months for 20% of list price.
 - **Features coming soon in upcoming releases:**
 - ◆ Full HTTPS support with auto host-name update and certificate generation.
 - ◆ Support for geographical and floor plan maps.
 - ◆ Support for IP sensors on E-xD.
 - ◆ Support for E-MICRO and E-1W monitoring systems.
 - ◆ Support for live stream video and recording videos from IP cameras.
 - ◆ Support for running the software as a Windows service.
 - ◆ Auto discovery of NTI devices from server.
 - ◆ Download data logs.
 - ◆ Support for auto load of E-xD configuration when changes are made directly on E-xD unit.
 - ◆ Email alerts from the software.
 - ◆ Report scheduling and generating PDF reports.
 - ◆ Push notifications from browser on Android and iPhone smartphones/tablets.



E-MNG-SH

Self-Hosted Enterprise Environment Monitoring System Management Software

- **Self-hosted software.**
- **No clients or special apps to install.**
- **Access from anywhere using a web browser on a computer, smartphone, &/or tablet.**
- **Monitor & configure up to 3,000 units & all connected sensors.**
- **Display values and status for individual or list of sensors.**
- **Customizable monitoring and layout for each user.**

Optional Management Software for E-2D/5D/16D.

E-MNG-SH is a self-hosted software program that provides an easy-to-use, unified interface for monitoring and configuring up to 3,000 E-2D/5D/16D units and all connected sensors (internal, external, and digital input) and output relays via Ethernet. The software is installed on a Windows-based server or computer to actively poll all units for status information and alerts. Any computer, smartphone, or tablet with a web browser can be used to access the software. It allows users to be kept up to date on sensor statuses and be alerted instantly when a sensor goes out of range of a configurable threshold.