

E-2DB/5DB AND E-MINI-LXOB BATTERY REPLACEMENT INSTRUCTIONS

The NTI E-2DB/5DB and E-MINI-LXOB Enterprise Environment Monitoring System contain a sealed lithium ion battery that may at some point need replacement. The failed battery must be properly disposed of. To replace the battery, carefully follow all instructions.

Note: The images below show an E-2DB, but the E-5DB and E-MINI-LXOB battery is changed using the same procedure.

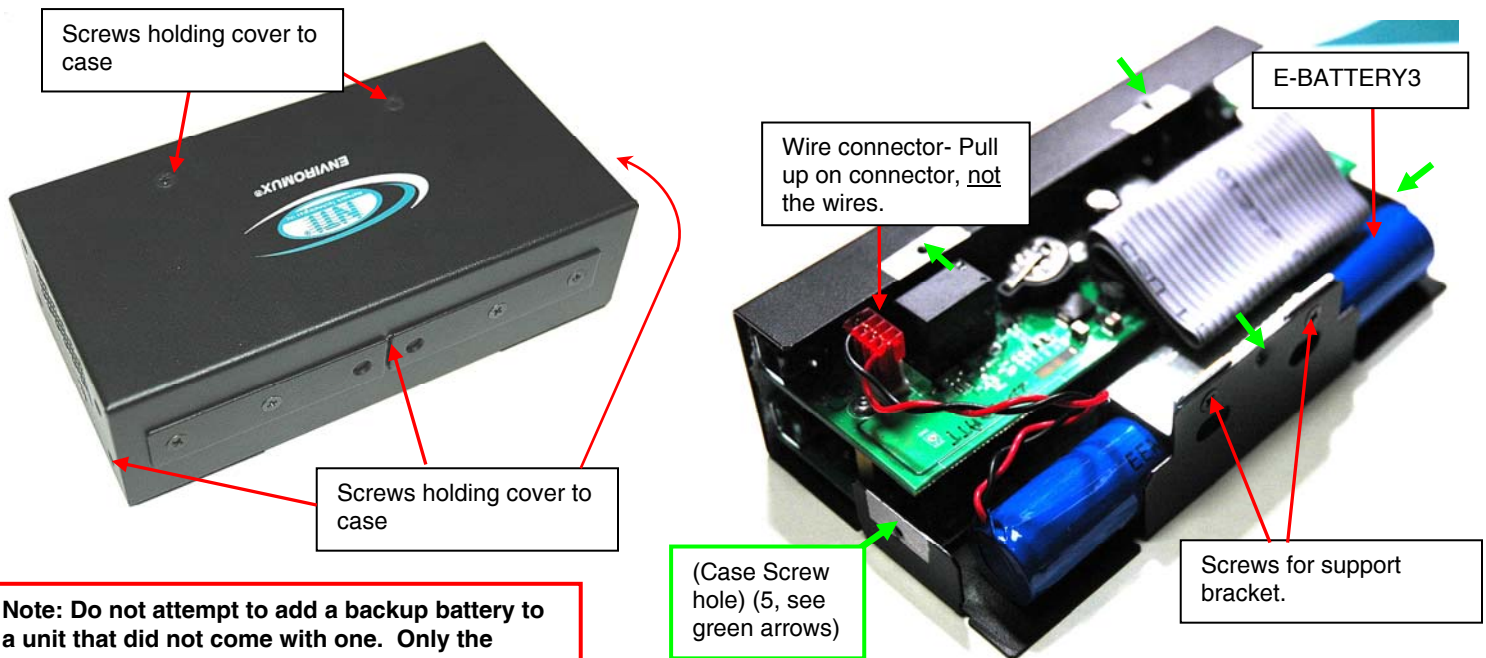
 **WARNING RISK OF ELECTRIC SHOCK! FAILURE TO FOLLOW ALL INSTRUCTIONS MAY RESULT IN ELECTRICAL SHOCK.**

Disconnect ALL power and connection cables from the ENVIROMUX before proceeding.

1. Ground yourself before opening the ENVIROMUX to discharge any static electricity you might be charged with.
2. Remove the 5 Phillips-head screws securing the cover of the ENVIROMUX to expose the components inside. (You may have to either first remove the mounting brackets or DIN rail clip to access the screw in the back of the case.)
3. Locate the battery inside the ENVIROMUX. (See figure below)
4. Unplug the red connector with red and black wires connecting the battery to the circuit board.
5. Remove the 2 Phillips-head screws securing the bracket holding the battery to the case.
6. Remove the battery.
7. Place the new battery in the case with the wires exiting the battery in the same position as the battery that was removed.
8. Reinstall the 2 Phillips-head screws to the bracket to secure the battery.
9. Re-attach the red plug at the end of the wires to the header on the circuit board. Be sure the wire connector is fully seated.
10. Reinstall the cover of the ENVIROMUX.
11. Dispose of the battery according to local requirements.

Note: Connect power to the ENVIROMUX (unit does not have to be ON) and charge new battery for at least 24 hours before putting the ENVIROMUX in storage, and if kept in storage, recharge the battery every 6 months.

For instruction on the proper disposal of the battery, either contact the Rechargeable Battery Recycling Corporation (RBRC) at 800-822-8837 or go to their website at www.call2recycle.org. Disposal will be at no cost to you.



Note: Do not attempt to add a backup battery to a unit that did not come with one. Only the E-5DB/-2DB and E-MINI-LXOB were designed to support these batteries.